

P E N E L A S A R C H I T E C T S

PORTFOLIO SELECTED PROJECTS

Madrid, Spain

Email. info@penelas.com

Website. www.penelas.com



I N D E X

SELECTION OF PROJECTS

ABOUT US

Summarised CV	03
Office Profile	04

URBAN DESIGN & NATURE

Juan Carlos I Park	07
Flora Museum and Greenhouse	11
The Hidden Pavilion	14
7 Bridges in Shanghai & Landscape	18
New Pradolongo Park	19
Reina Sofia Square	21
Lavapiés District	23
Castellana Street	23

RESIDENTIAL

House in Valdesimonte	24
House in Las Matas	25
House in Las Rozas	27

CULTURE & SOCIAL

Nature Centre	27
Elderly Center	28
Open Air Auditorium	30
Helsinki Library	31
Santa Elena Towers.....	32
Laoratories	32
Pavilion Expo Zaragoza.....	33
Jeju Island Aviary.....	33

MASTER PLANS

Saemangeum	34
Valdebebas Park	35

JOSE LUIS ESTEBAN PENELAS

PENELAS ARCHITECTS

Dr. Architect. Chaired Professor at the School of Architecture, European University of Madrid, Spain.
Email. epenelas@yahoo.com
Website. www.penelas.com



SUMMARISED CV

Jose Luis Esteban Penelas, PhD. Architect, Principal & Founder of Penelas Architects

Jose Luis Esteban Penelas graduated as an Architect and Urban Designer at the Polytechnic University of Madrid and he is currently Doctor at the European University of Madrid.

In 1992 he established his own office of Architecture and Urbanism in Madrid - PENELAS ARCHITECTS - a creative office of architecture and infrastructural design and one of the most renowned offices in Spain. The office conceptualises, develops, and constructs architectural projects consisting of buildings, urbanism, landscape, engineering and sustainability, incorporating different disciplines of Architecture and Urbanism.

He is currently developing projects of architecture and urbanism in Spain, Latin America, Korea and China and has been responsible for a large number of design and construction projects. His most outstanding works include urban rehabilitation projects such as the Juan Carlos I Park (220 Hectares), the Plaza for the Reina Sofia's Modern Art Museum, the Flora Museum and Greenhouse, the urban design of Lavapiés Madrid Centre District, the Green Screen Park, the Green Corridor of Madrid, the extension of San Isidro Park, Police quarters, an elderly people's residence, the Master Plan for the new city of Saemangeum in South Korea, 35 km long and for 5 million people, and the project Metamadrid, 300km long.

His works have been internationally published, receiving more than fifty national and international awards and have been exhibited world wide. He has been invited as both a Professor and lecturer in Barcelona, Seville, Madrid, Seoul, Tongji University in Shanghai, Tsing Hua University in Beijing, Berlin, Bogota, Genoa, Paris, Milan, Trento, London, USA, and Mexico, among others. He is author of many books, writings and articles; including his latest books "Architectures XXI Century" (2007), "Building the Future City" (2009), with the latest theories and thoughts for the development and planning of new Metacities of the XXI Century, and "Super-places: Inter-media spaces" (2007) in which he proposes a new critical theory to project space in architecture and contemporary cities.

He has been Curator of the Pavilion of Spain at the Architecture Biennale of Rotterdam (2005); Curator at the Architecture Biennale of Shenzhen / Hong Kong (2013); Guest at the Architecture Biennale of Venice (Swiss Pavilion, 2014) and at the Architecture Biennale of Shanghai (2015).

He was a Professor at the School of Architecture of Madrid, Polytechnic University (1989-2002); he has been Director Architect of Projects and Urban Design in the Madrid Council (1989-1998).

He is currently Chaired Professor of Architectural Projects at the School of Architecture, European University of Madrid (1998-2012) and Professor at the Master of Landscape at the Polytechnic University of Madrid (1989-2007).

He is the founder and Director of the Research Group AIR LAB CITIES (Advanced Architecture International Research Laboratory of Cities) of the European University of Madrid with which he has developed international projects.

OFFICE PROFILE

PRESENTATION & PHILOSOLPHY

PENELAS ARCHITECTS is an international Architecture, Urban Design and Master Planning office with a broad trajectory and range of experience. The office is founded and directed by Dr. Architect Jose Luis Esteban Penelas, and has over 28 years of experience.

Penelas Architects designs and builds a wide range of projects, and is involved in all phases of the project - from management, design and construction to the development, management and control of the works on site. The office's diverse infrastructure is formed of architects, civil and industrial engineers, landscape architects and building technicians. Penelas Architects conceives, design and build projects of varying programmatic function in both historic cities as well as emerging. Projects range from large scale projects, such as urban design and master plans to museums, auditoriums, plazas, office buildings, housing units of all typologies, parks – including commercial parks - public and private schools, the restoration of historical buildings, furniture design, etc. Furthermore, the office develops its design process with a commitment to sustainable design, respecting the environment and its contextual surroundings.

During its history, the office has built a broad range of strong client relationships in both the private and public sector, providing a highly efficient and professional service in all phases of the project. Their vast range of projects, built works in the field of construction and urban design have been acknowledged on an international scale, obtaining more than fifty architecture and urban prizes, and have been both published and exhibited in the most prestigious galleries and architecture fairs in the world. The office is currently developing projects in Spain, South America, South Korea and China.

BUILT PROJECTS

- Housing Building in Madrid, Spain (2021, in process)
- Master Plan of 3.400 dwellings and urban design in Quito, Ecuador (2021, in process)
- Villas in Amsterdam, Holland (2019-21, in process)
- Laboratories Sevilla, Spain (2019-2021)
- Seven bridges and Landscape in Shanghai (2016-2021)
- Four towers in Ecuador, Santa Elena (2014)
- Office Tower in Costa Rica (2012)
- Extension of the Pradolongo Park in Madrid (2008)
- Extension New Pradolongo Park in Madrid (2007)
- 30 Housing Units in Madrid, currently under construction.
- New spaces for the Mediterranean Flora Museum and Greenhouse Building Madrid. 2006
- Boulevards in Madrid. Urban design and urban planning of the redesigning of the 24 km of boulevards, 2004. Area 575.000 m2
- Villa in Las Rozas. Madrid. 2002
- House and pavilion for resting and meditating. Aranjuez, in construction.
- Architectural Entrance Mural. Madrid. 2003 in construction.
- Building centre for Elderly. Madrid. 2003.
- Housing Building. Madrid. 2001-2003.
- Mediterranean Flora Museum and Greenhouse Building Madrid. 1996-2000.
- New Juan Carlos I Parking and Landscape Madrid. 1999.
- New Closing Gate for King Juan Carlos I Park in . Madrid. 1999.
- New Access Plaza and Connection Boulevard between Juan Carlos I Park and Avenida de Logroño. Madrid. 1999
- New Access Plaza and Connection Boulevard between King Juan Carlos I Park and Avenida de Logroño. Madrid. 1999.
- New King Juan Carlos I Parking and Landscape. Madrid. 1999.
- Gardens and urban design for Area 1 Intervention M-40 motorway borders. Madrid. 1998.
- Redesign of Manuela del Campillo Plaza. Lavapies. Madrid. 1998.
- Redesign of Lavapies plaza. Madrid. 1998.
- House in Galapagar. Madrid. 1998.
- Urban design of Lavapies Madrid Centre District. 1996-1998.
- Plaza for the National Museum of Modern Art Queen Reina Sofia in Madrid 1996-1998.
- House in Segovia 1996-1998.
- Showroom for Design Company. Madrid. 1996.
- Building Director Office Building Extension New Municipal Auditorium Conference Centre Area 17.000 m2 Madrid 1992-94.
- Two Metallic bridge over tracks L 80 m. 1994.
- Medical Centre Galapagar. Madrid 1994.
- Building Director New Municipal Auditorium Conference Centre. Madrid. Area 60.000 m2. 1990-1993.
- Permanent Information Offices for Madrid Council. Madrid Fair. 1993.
- King Juan Carlos I Park. 1989-1992. Area 200Ha (2.200.000 m2), surrounded by a 3 km circular path, a 2km artificial river, 13 km paths, 7 pave plazas 1Ha each, 2220 olive groves, canals, 12 bridges, 3 lakes, fountains, waterfalls, 5 pyramidal hills, 15 major pieces of international sculptures, open air amphitheatre.
- Golf course area:60 Ha Madrid 1992-94.
- Monument entrance gate to Juan Carlos I Park. 1992.
- Nine reinforced concrete bridges. Madrid 1992.
- San Isidro Plaza and Park Madrid 1991.
- Exhibition Pavilion for Madrid Council. National Equipments Fair. 1991.
- Exhibiton Pavilion for Madrid Council. International Equipmetn Fair. Cannes. France. 1990.
- Exhibition Pavilion for Madrid Council. National Meeting Madrid- Barcelona – Sevilla. Madrid. 1990.
- Exhibition Pavilion for Madrid Council. National Equipments Fair. Madrid. 1990.
- Offices for the Polytechnic Distance Centre. Madrid. 1988.
- Sport Centre in Green- Screen Park Madrid. 1988.
- Stage designs for Iberia Airlines including audience, access, exhibition press and information areas. Conde Duque Museum. Madrid. 1988.
- Restaurant in Pozuelo, Madrid,1988.
- Building Centre for Headquarters Municipal Police. Madrid. 1987.
- Green Screen Park Madrid. 1987.
- Stage designs for Iberia Airlines including audience, access, exhibition, Press and information areas, Barajas airport Madrid. 1987. Redesign of Plaza Olavide Madrid. 1986.

SELECTED AWARDS

- First Prize in the Internacional Competition “International Invited Design Competition for Main Street of Yangdong District”, organized by Seoul Metropolitan Government, 2019.
- 1st Prize in the International Competiton to built 7 bridges in Shanghai, 2015. Construction date begins in December 2016.
- 1st Prize in the Competiton to built a Shopping Centre, Madrid 2012
- 1st Prize in the International Competiton to remodel a Shopping Centre and Office building, Madrid. 2011.
- 1st Prize in the International Competiton by invitation to only 7 teams (only Spanish participant) selected on curriculum merits to develop a Master Plan for a new city in Saemangeum (South Korea) for 15 million of habitants, with the dimensions of 35km by 35km. February - August 2008.
- 2007 First Prize in the competition for the New Auditorium in Latina District, Madrid
- 2007 Honourable Mention in the Madrid Council’s Prize for Architecture and Urbanism for the project “Metamadrid. Supercluster”, promoted by the Universidad Europea de Madrid.
- 2006 Second Prize in the International Competition for the New Silk Road Park, in Xi’An (China)
- 2005 Invited professor by the department of Interior and Landscape Design, in the Academy of Arts of Arts and Design in Tsinghua University, China.
- 2005 Invited professor by the Institute of Interior Design in the Annual Conference and International Academic Exchange, in Guilin, China.
- 2005. Second prize in the International Competition for the Pavilions for the International Exhibition of Zaragoza 2008, Spain
- 2005. Curator for Spain in the II International Biennial of Architecture in Rotterdam, Holland.
- 2004. First Prize National Competition of Housing in Madrid.
- 2003 III Biennial of European Landscape Architecture for the Mediterranean Flora Museum and Greenhouse. Barcelona.
- 2003 Second Prize Competition 60 Dwellings in Madrid.
- 2002 First Prize Competition for Pradolongo Park. Madrid.
- 2001. II Biennial of European Landscape Architecture for the Plaza for the National Museum of Modern Art Queen Sofia in Madrid.
- 2001 First Prize Competition for Building Centre for Elderly. Madrid.
- 2001. Madrid Region Quality Awards for Architecture, for the Mediterranean Flora Museum and Greenhouse.
- 2001. Honorable Mention in the Castilla Awards, for House in Segovia. Spain.
- 2000 Second Prize Competition 140 dwellings in Madrid.
- 1999. Triennial National Association for Reinforce Concrete for the Mediterranean Flora Museum and Greenhouse. Spain.
- 1998 Madrid Council’s Prize for Architecture and Urbanism for the Plaza for the National Museum of Modern Art Queen Sofia in Madrid.
- 1997 Triennial International of Milan for Public Space Architecture for the Juan Carlos I Park in Madrid. Milan. Italy
- 1997 Triennial International of Milan for Public Space Architecture for the Plaza of the National Museum of Modern Art Queen Sofia in Madrid.
- 1992 II Edition of Prizes for Young Spanish Architects for the Juan Carlos I Park. Madrid, Spain.
- 1992 II Biennial of Spanish Architecture (1991-92) for the Juan Carlos I Park in Madrid.
- 1992 Madrid Council’s Prize for Architecture and Urbanism for the Juan Carlos I Park in Madrid.
- 1992 Madrid College of Architects Urbanism Prize for the King Juan Carlos I Park.
- Honourable Mention in the Prize of Architecture and Urbanism of the Council of Madrid for the Urban Design for the Green Corridor Railway of Madrid.
- 1988 Second Prize Competition for Building Calculation Centre for the Spanish Telephone Company, Madrid.

ARCHITECTURAL PUBLICATIONS

Works and projects published in numerous international books and architectural publications such as “The Metapolis Dictionary of Advanced Architecture” Actar Ed; “World of Environment Design. Nature Conservation and Land Reclamations”, “Parchi. Europa 1985-2000” Federico Motta Editore. “Madrid New Architecture”, Madrid Colle of Architects; “Office” Architecture Tools F. Motta Editore Milán 2002; and has been published in both national and interantional magazines or architecture and landscape, like “L’Architecture d’Aujourdh’hui”, “El Croquis”, “Topos”, “Arquitectura”.

EXHIBITIONS

His works have been included in Architectural Biennials, exhibitions galleries and museums, among others: Yale University (USA), Los Angeles (USA) Barcelona, Madrid (Spain), Milan (Italy), Guilin (China), Beijing (China)

JUAN CARLOS I PARK

Madrid, Spain.

1989-1992

RECREATIONAL PARK & LAKE





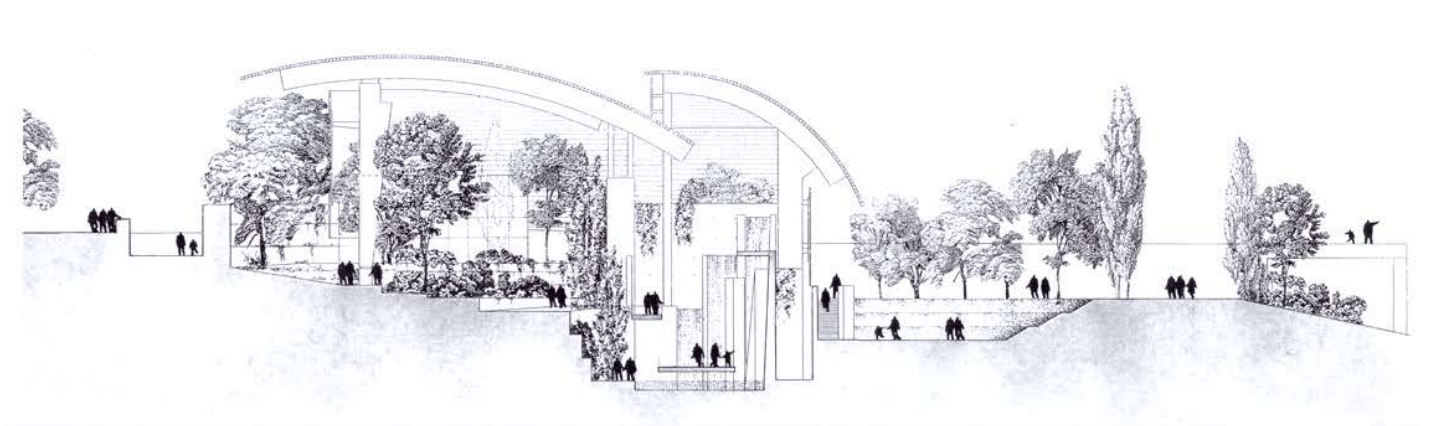


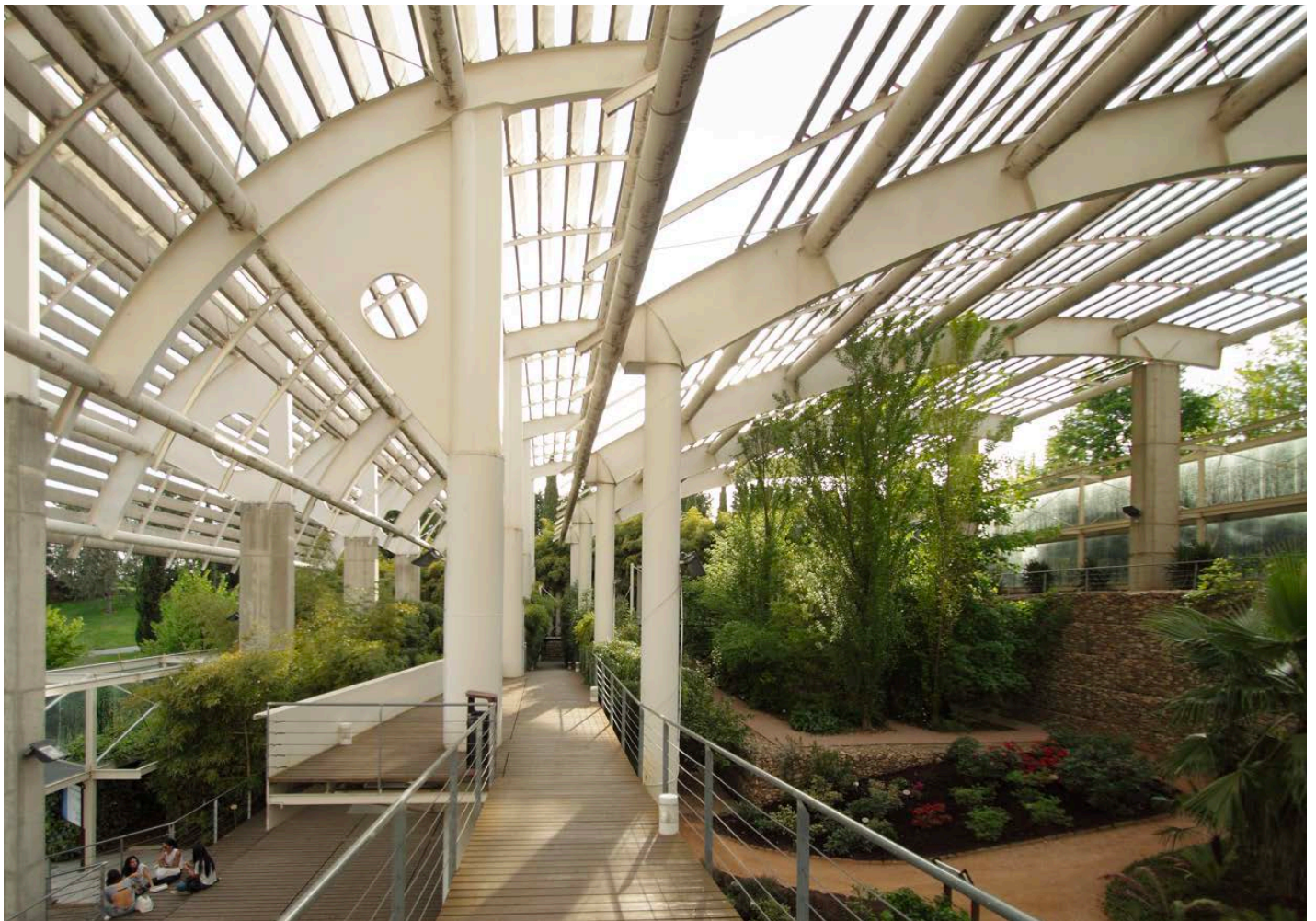
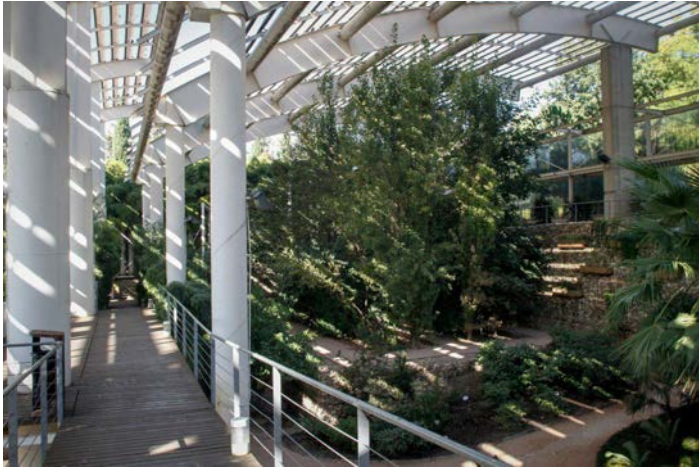


FLORA MUSEUM AND GREENHOUSE

Madrid, Spain.

MIXED USED SOCIAL AND CULTURAL







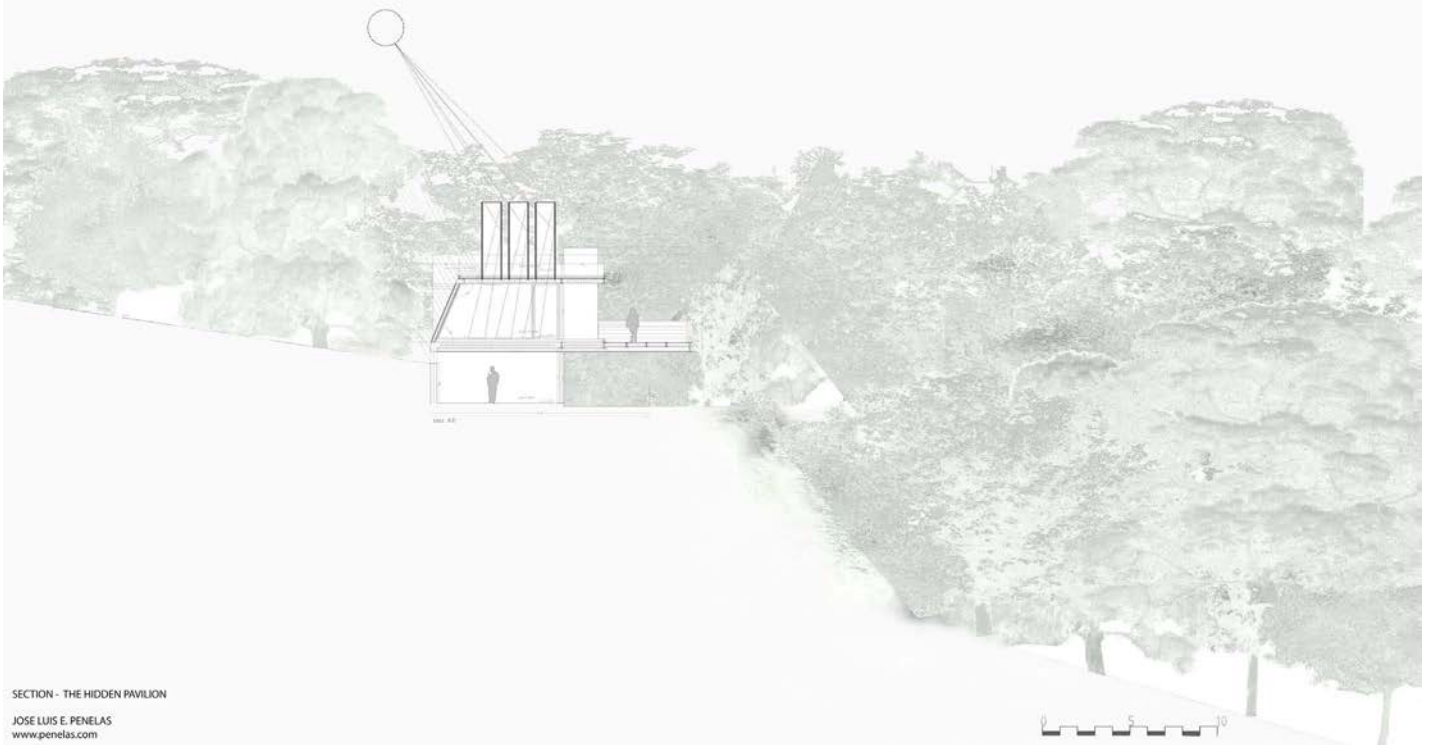
THE HIDDEN PAVILION

Madrid, Spain.

2016

RESIDENTIAL BUILDING





SECTION - THE HIDDEN PAVILION

JOSE LUIS E. PENELAS
www.penelas.com





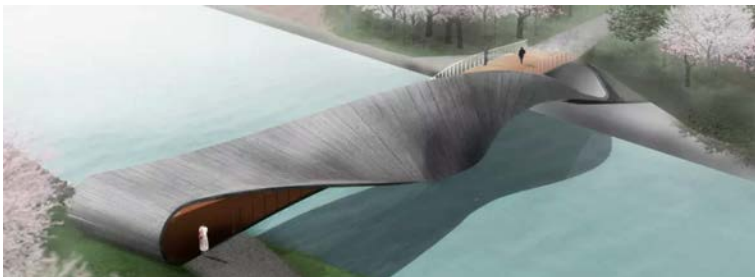
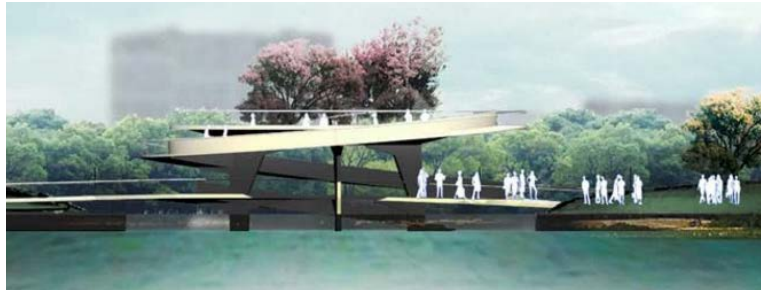


7 BRIDGES & LANDSCAPE

Shanghai, China 2016-Currently under construction

M A S T E R P L A N

WITH: PEDRO PABLO ARROYO, FERNANDO PORRAS, LORENZO F-ORDOÑEZ, FRANCISCO DOMOUSO ARCHITECTS



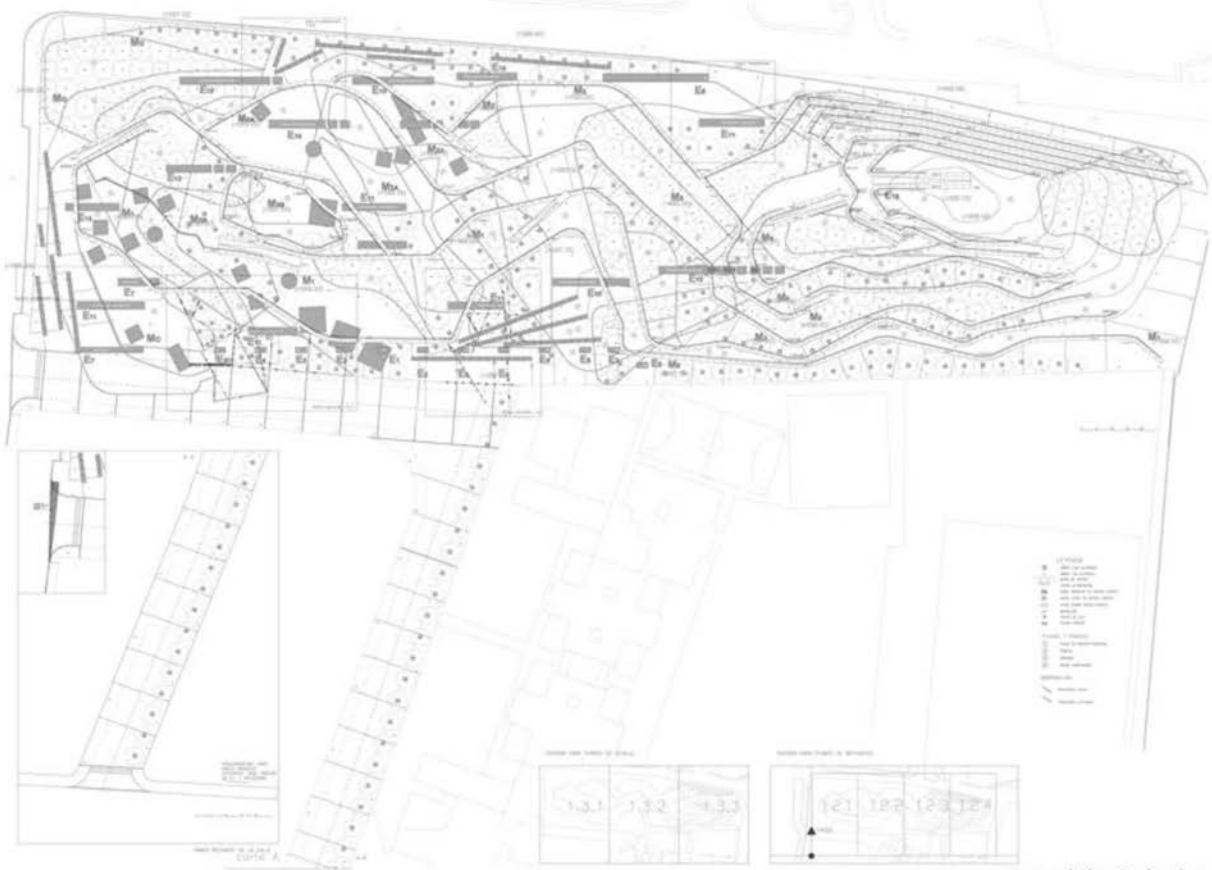
PRADOLONGO PARK

Madrid, Spain.

2006

LANDSCAPE DESIGN





General Plan Scale :1/xxxx



General Section :1/xxxx



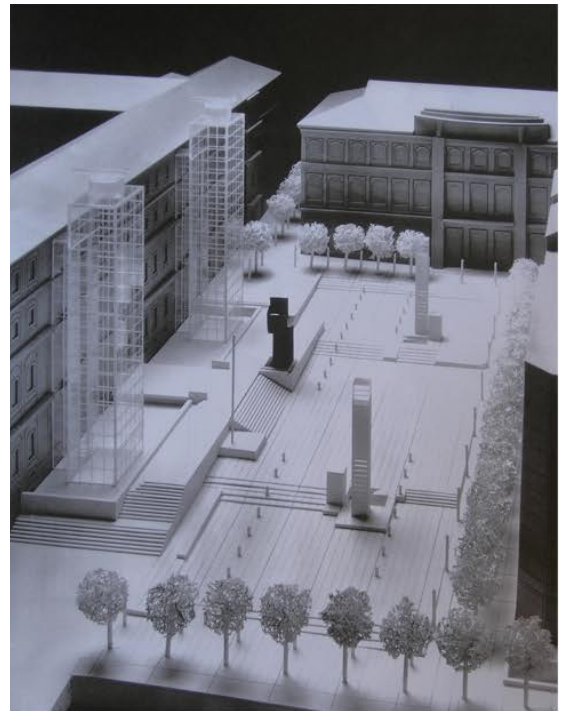
REINA SOFIA SQUARE

Madrid, Spain.

1996-1998

URBAN REHABILITATION





LAVAPIES DISTRICT

Madrid, Spain.

1996-1997

URBAN & HERITAGE REHABILITATION
OF MADRID'S HISTORICAL CENTRE

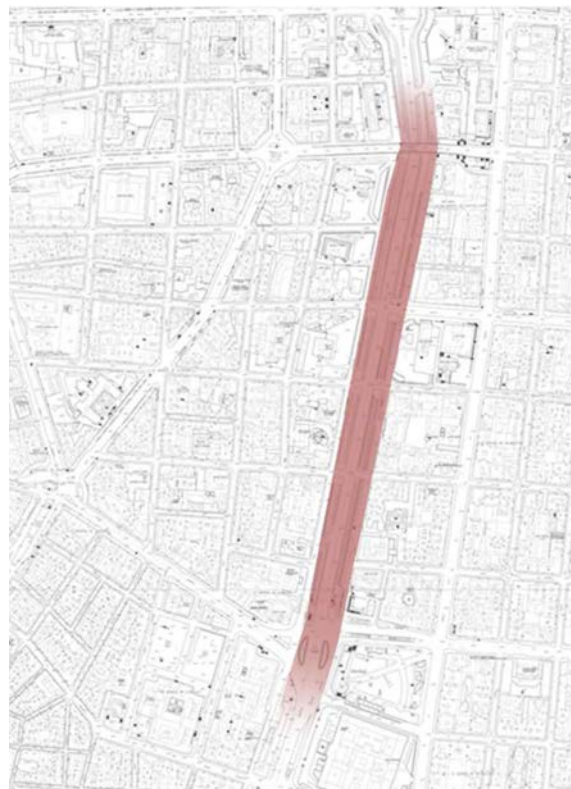


CASTELLANA STREET

Madrid, Spain.

1999-2001

URBAN REHABILITATION, FIRST PHASE

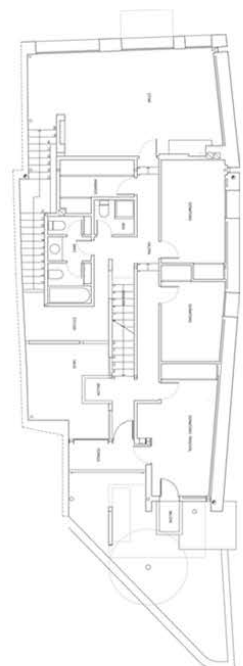
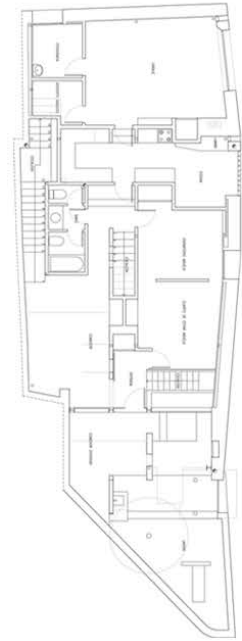


HOUSE IN VALDESIMONTE

Segovia, Spain.

1997

RESIDENTIAL BUILDING

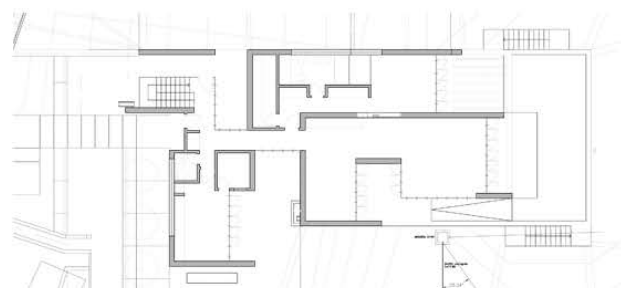
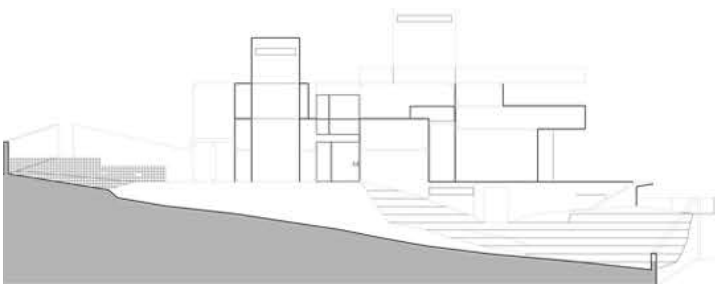


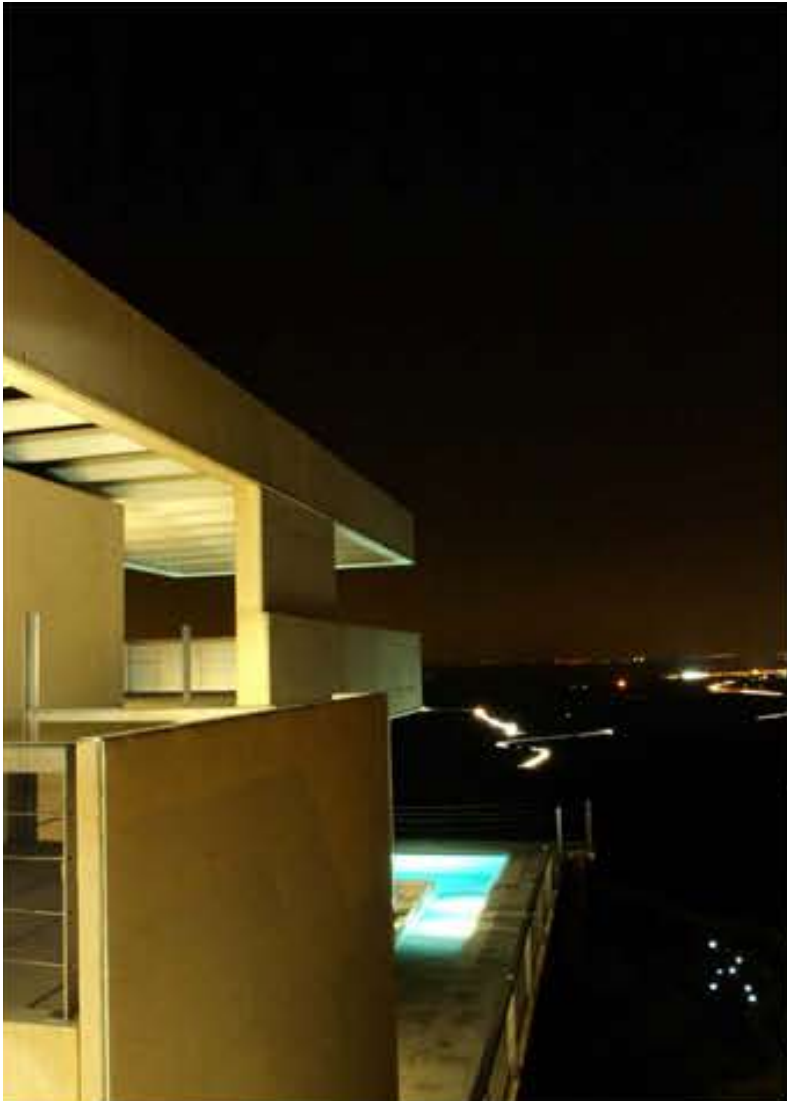
HOUSE IN LAS MATAS

Madrid, Spain.

2008

RESIDENTIAL BUILDING



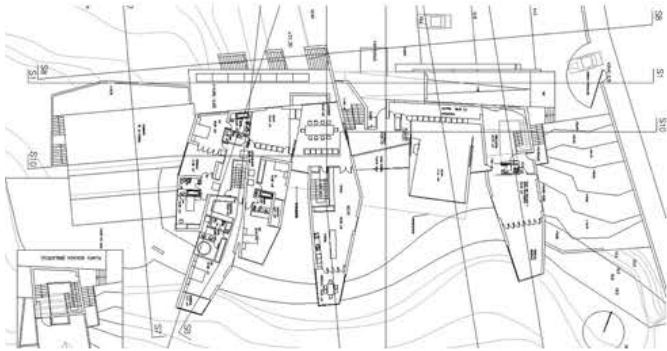


HOUSE IN LAS ROZAS

Madrid, Spain.

2005

RESIDENTIAL BUILDING



NATURE CENTRE

Guadalajara, Spain.

2010

CULTURAL & NATURAL CENTRE



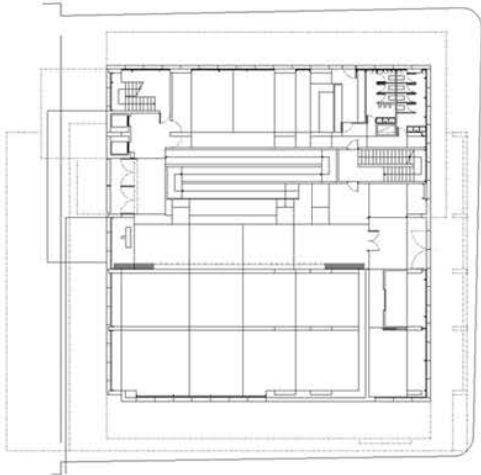
ELDERLY CENTRE

Madrid, Spain.

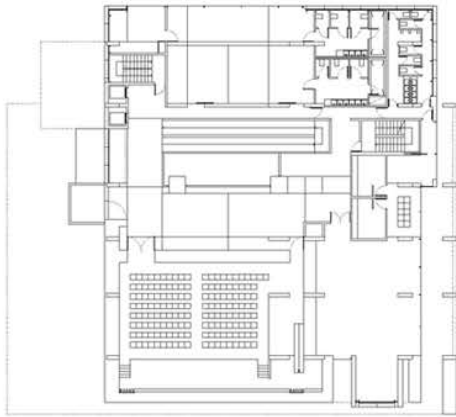
2003

RESIDENTIAL BUILDING

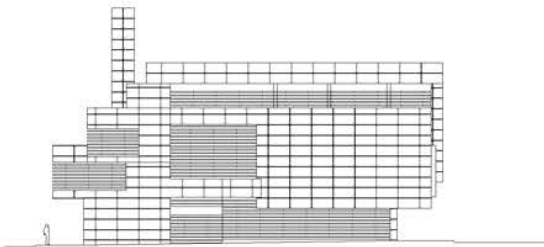




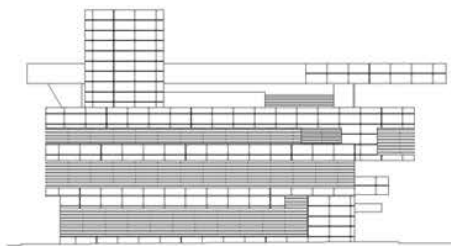
CENTRO DE MAYORES.
PLANTA ACCESO. RECEPCIÓN-FOYER-SALA POLVALENTE-ASISTENCIA SOCIAL-RESTAURANTE



CENTRO DE MAYORES.
PLANTA PRIMERA. SALÓN DE ACTOS-GIMNASIO-SALA DE FISIOTERAPIA-CENTRO DE DÍA



ALZADO PRINCIPAL



ALZADO OESTE

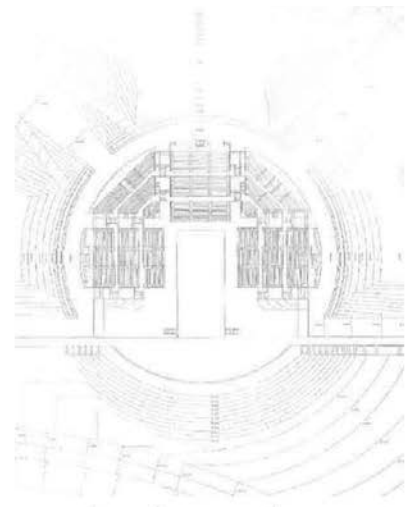
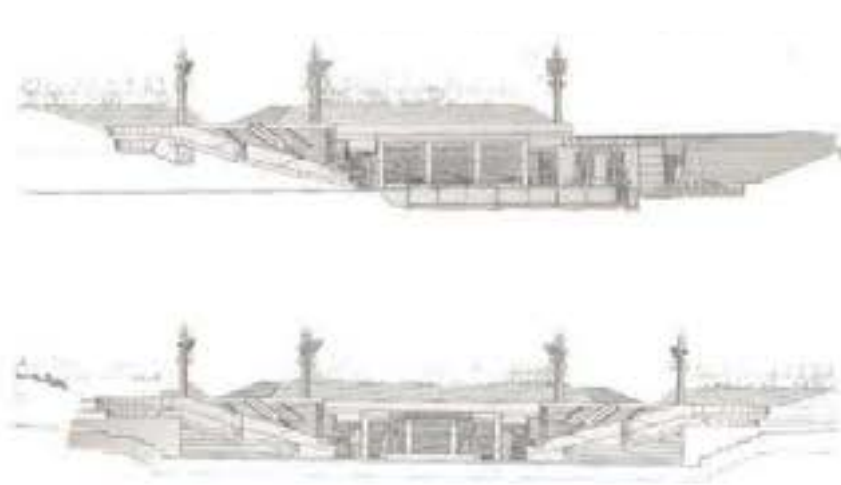
OPEN AIR AUDITORIUM

Madrid, Spain

1990-1992

EDUCATIONAL BUILDING

CONSTRUCTION WITH ANTONIO FERNANDEZ ALBA



HELSINKI LIBRARY

Helsinki, Finland

2013

CULTURAL & OFFICE BUILDING



SANTA ELENA TOWERS

Santa Elena, Ecuador Currently under construction

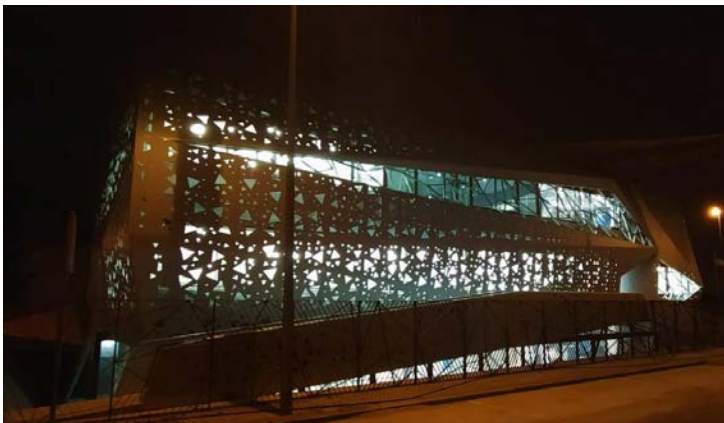
HOUSING & OFFICE BUILDING



LABORATORIES

Seville, Spain Currently under construction

INDUSTRIAL BUILDING

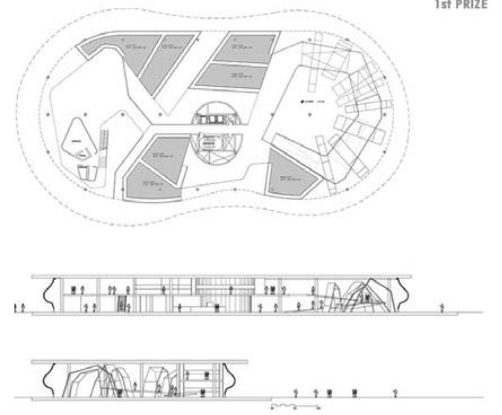


PAVILION EXPO

Zaragoza, Spain.

2008

BUILDING

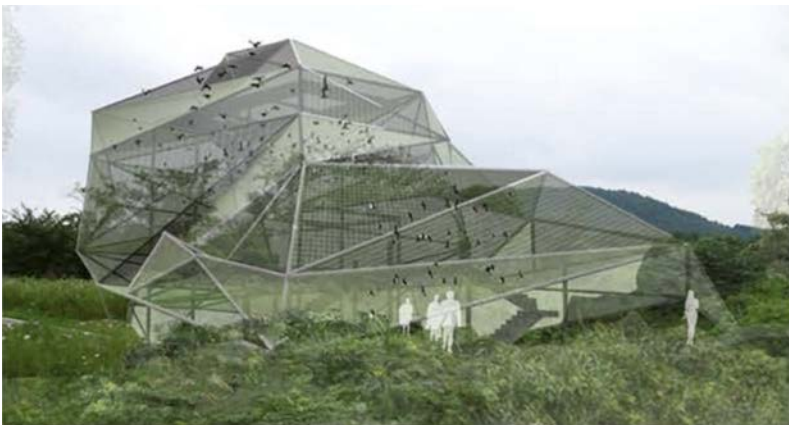


JEJU ISLAND AVIARY

Jeju, South Korea

2006

NATURAL AVIARY



SAEMANGEUM

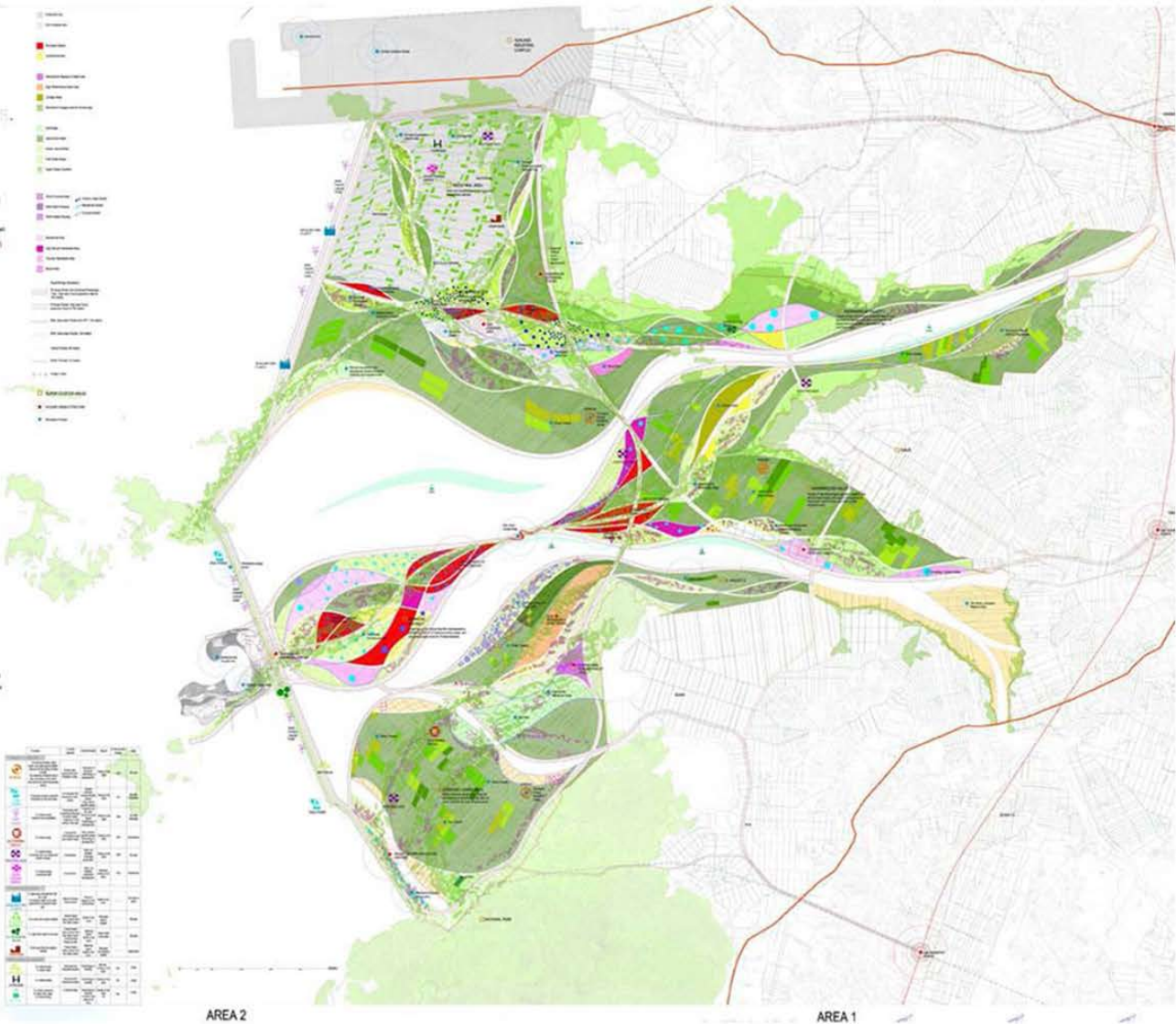
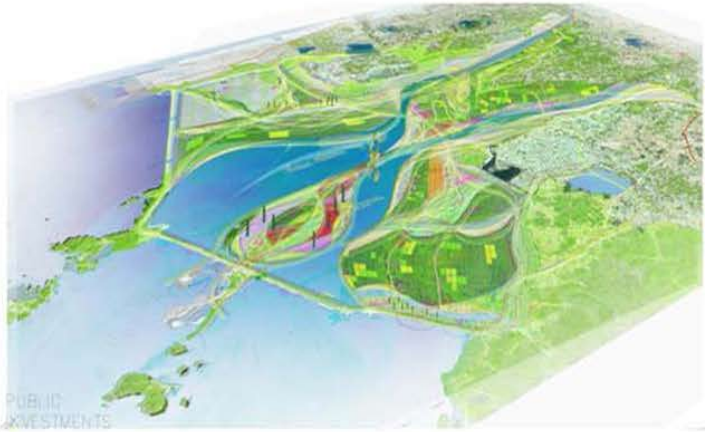
Saemangeum, South Korea

2008

MASTER PLAN

AREA 57.281,72 Hectares

The concept emerges from the analysis of the movements of landscapes formed in Nature: landscapes of woods pictured from satellites and the microscopic images of the conformed structure of the cells of a leaf. Both landscapes – never perceptible from a purely human point of view, achieved both through technological means – leads to establish the strategy of the project, capable of relating the micro scale with the planetary scale through the concept of movement and speed. Our concept is formed by landings of speed which intercommunicated. With the philosopher Deleuze we call landings to all multiplicity connectable with other spaces by superficial underground stems, in order to form and extend a rhizome. We can project landscape and architecture as a continuous space. We have formed it by landings. With multiple entrances and meanings and connections: we propose a multicultural mixture. In this way liquid-fluctuating spaces will emerge, run by different speeds in which each structure presents an auto-similitude with the totality. But at the same time, the concept is included in a conceptual operation, which unifies the cultural identity and the relations between cultures, in this way, movement which complements the conceptual aspect. This Conceptual Architecture emerge as a living organism: connectable and changeable in its use, without an origin or an end; it is the thrilling relationship between the immutable through time (Architecture) and the constantly mutable (Nature).



VALDEBEBAS PARK

Madrid, Spain.

2006

LANDSCAPE & RECREATIONAL



P E N E L A S A R C H I T E C T S

PORTFOLIO SELECTED PROJECTS

Madrid, Spain

Email. info@penelas.com

Website. www.penelas.com